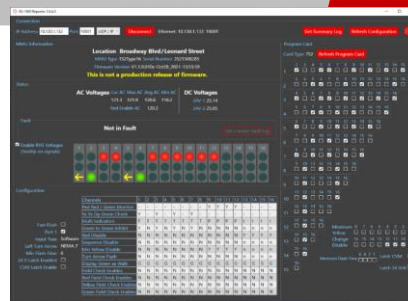


# SG-1000 NEMA MMU2 and Conflict Monitor

Oriux sets the new standard for NEMA Conflict Voltage Monitors and NEMA Malfunction Management Units with the Oriux SG-1000 Series Monitors.

The Oriux SG-1000 Series Monitors offer an improved display for the dynamic status display of each input on each channel.

## SG-1000 Companion Software



## Features & Benefits

- Supports Flashing Yellow Arrow per amendment 4 of NEMA TS2-2003
- Exceeds both NEMA TS1-1989 functional and environmental requirements for a conflict monitor and NEMA TS2-2003 for functional and environmental requirements for an MMU. USB port is an industry 1st.
- The large keyboard reduces menu steps and complexity in the data entry system and eliminates the clutter and confusion of multiple dip switches.
- Records high and low voltage conditions. Initially brought in Double Diamond, continued in SG-1000
- Voltage measurement and display of all signal indicators for each channel and color input for TS1/TS2
- 4 x 20 yellow OLED - fully operational over temperature without the need for backlight or contrast control.
- Event log - downloadable to USB flash drive or to PC through USB device port or optional serial/Ethernet port.
- User-friendly, menu-driven 16-key data entry system has tactile and audible feedback, eliminating the need for cumbersome dip switches.
- Front panel USB device port, optional EIA232 or ethernet, for printing the event log and all user settings and program card jumper.
- SG-1000 Companion Software provides a Graphical User Interface with all list status, fault status, configuration and program card info on a single and intuitive main view.

## Specifications

<b>Power</b>	89 to 135V AC, 50/60Hz
<b>Requirements</b>	220V option: 89 to 265 V AC, 50/60 Hz
<b>Humidity</b>	0 - 95% non-condensing
<b>Environment</b>	Meets NEMA environmental standards
<b>Compatibility</b>	NEMA TS-1 12 channel or NEMA TS-2 16 channel
<b>Operating Temperature</b>	-40°F to 176°F (-40°C to 80°C)

## Event Logging & Recording

- Logs 200 events including reset
- Voltage log records outside of users thresholds
- Replay mode allows a user to view the last twenty GYR displays prior to a fault
- Real-time clock provides time and date stamp in each event to nearest second
- Logs complete channel status at time of fault
- Keyboard options allow separate printing of event log and unit settings

## Additional Features

- 12 channel NEMA TS-1 and 16 channel NEMA TS-2
- Compatible with both NEMA TS-1 and TS-2 Standard compatibility programming cards
- Viewing of Port 1 RS-485 R-Y-G status in addition to field status of R-Y-G AC inputs
- Dedicated RESET button for simplicity
- Selectable latch options for CVM and 24 volt faults
- Enhanced absence monitoring allows absence detection with Walk input
- Enhanced channel monitoring permits selectable color fault combinations
- Enhanced signal sequence monitoring feature is compatible with all NEMA controllers
- Individual channel absence timers
- DC input for remote flash command
- Non-volatile retention of fault status and logs; displays all channels and colors when power is restored